

#### SEAFLEX WATERLOAD™ RANGE

Since their introduction over ten years ago, Seaflex WaterLoad test weights have proved themselves to be safe and reliable, easy to use and excellent value for money.

Each unit is certified as being constructed in accordance with rigorous ISO 9001:2000 procedures, approved by Lloyds Register Quality Assurance, to a design that has physically passed the 6:1 type test at TUVNEL Ltd in Glasgow.

High quality performance fabrics, reliable HF welded seams and versatile filling/discharge arrangements have made Seaflex WaterLoads the first choice for increasing numbers of test houses world wide.

Capacities of 1t - 35t allow WaterLoads to be used singly or in clusters to produce test loads of up to 100t in one cluster. Multiple clusters can be used for higher loads.



Austin & McLean 300t Load Test on Maersk Advancer



35t WLB being successfully type tested at TUVNEL Ltd. Glasgow.

While the water filled ballast bag concept is nothing new, several innovative features have been incorporated in Seaflex WaterLoad Test Weights to make the user's life easier. Seaflex 'J' Tube filling arrangement can be positioned anywhere over the hem of the bag *after* attachment to the crane's hook to prevent the risk of the fill hose being trapped between bags.

Filling is by 2½" full bore 'fire hose' terminating in quick release couplings compatible with standard hydrants. The invert of all units of 15t and above are fitted with 3" bronze camlock coupling to accept a 3" discharge hose which empties a 35t unit in 22 minutes. Similar 2" camlock fittings on all units up to and including 10t ensure minimum time wasted after the test.

Handling the larger units has been greatly eased by delivering them in their own dedicated storage boxes which allows the bag to be hoisted straight out of the box for filling, and when emptied, lowered and flaked back down with minimal site handling. This reduces the manpower required, reduces site time and keeps the bags protected at all times.

**Overnight delivery from stock to UK Mainland**  
**Dedicated transport & storage containers**  
**Manifolds, extra hoses & load cells from stock**  
**Day or contract hire rates.**  
**No mobilisation or packing charges.**



#### WATERLOAD TEST WEIGHT RENTAL

Seaflex hold large quantities of WaterLoad test weights at their head quarters in Cowes, UK and have established stock holding agencies throughout Europe, USA, Middle East, Far East, and Australia. For agent contact details please visit [www.seaflex.co.uk](http://www.seaflex.co.uk)

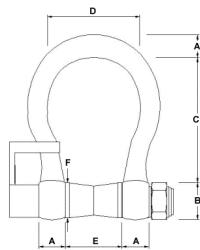
Individual bags may be hired by the day (subject to a minimum 2 day period), or for larger load tests with typically a greater hire period, lump sum hire charges are offered reflecting appreciable discounts.



Lomatech testing an 100t dock crane

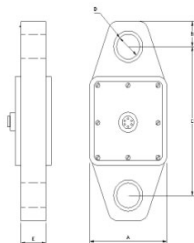
Unit		Packed			Filled		
Type	Kg	L	W	H	Kg	Diameter	Height
1-WLB	1,000	0.50	0.35	0.25	22	1.60	1.90
2-WLB	2,000	0.75	0.40	0.25	33	1.80	2.50
3-WLB	3,000	0.80	0.35	0.30	42	1.80	2.70
5LH-WLB	5,000	0.90	0.50	0.35	58	2.20	3.10
10-WLB	10,000	1.10	0.50	0.40	85	2.30	4.80
15-WLB	15,000	1.20	1.00	0.40	145	2.70	5.40
20-WLB	20,000	1.20	1.00	0.55	160	3.20	5.50
25-WLB	25,000	1.20	1.10	0.65	210	3.80	5.90
35-WLB	35,000	1.20	1.10	0.80	240	4.15	6.60

#### Seaflex also hire load cells and load shackles



##### Telemetry Dual Load Shackles

- Ideal for Measurement Applications with Limited Headroom.
- Robust anti-rotation bracket.
- Special load bobbin design.
- Re-chargeable or disposable battery power.
- Traceable calibration.
- Wireless 300m operation.
- Eliminates possible cable damage.



##### Tensile Load Cells

- The well proven use of high strength to weight ratio materials allow the production of easy to handle high safety factor units.
- Cable Less signal transfer up to 200 metres.
- High resolution display.

Seaflex stock a range of additional items including Spreader beams, Green pin shackles, Calibrated water meters, compressed air and petrol driven water pumps and 75ft fireman's hoses.

